

www.islacoral.com

[@islacoralresidences](https://www.instagram.com/islacoralresidences)

ISLA CORAL

LUXURY RESIDENCES
Punta Cana



An aerial photograph of a tropical beach. On the left, there are several multi-story buildings with white walls and orange-tiled roofs, surrounded by lush green palm trees. A wide, white sandy beach runs along the coast, dotted with many people and numerous thatched umbrellas. The water is a vibrant turquoise color, with darker patches of coral reef visible beneath the surface. Several boats, including a large white ferry and several smaller speedboats, are scattered across the water. A long wooden pier extends from the beach into the sea. The overall scene is bright and sunny, capturing a classic tropical vacation spot.

PLAYA LOS CORALES DE BAVARO

Isla Coral is an exclusive and modern residential area located in Los Corales de Bávaro, just 20 minutes from the Punta Cana international airport, enjoy the comfort of walking along this same beach just 5 minutes from your apartment, where you will feel a Caribbean experience, luxury and comfort.

PLAYA LOS CORALES DE BAVARO





LOCATION

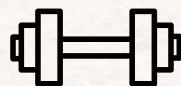
ISLA CORAL RESIDENCES is located a 3-minute walk from different commercial areas that will have a large supermarket, shops, banks, and all the services you may need.



AMENITIES



2 AND 3 BEDROOM
APARTMENTS



GYM



AIR-CONDITIONED LOBBY
LUGGAGE STORAGE



PLAYGROUND
AREA



CONCIERGE AND
VALET PARKING



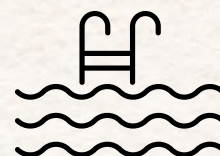
INTERNATIONAL AIRPORT 20
MINUTES AWAY.



UNDERGROUND
PARKING



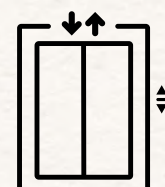
AIRBNB FRIENDLY



POOL, LOUNGE
AREA



BEACH CLUB
ACCESS



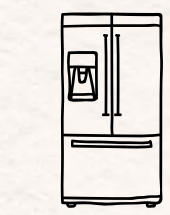
DOUBLE ELEVATOR



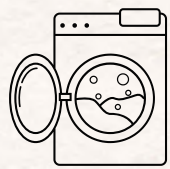
BEACH - 5 MINUTES
WALK.

**Home
Appliances
A/C inverter
Included**

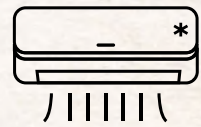
HOME APPLIANCES INCLUDED



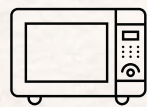
INVERTER FRIDGE 18
CUBIC FEET-36"



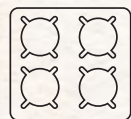
WASHER/DRYER TOWER
22 LBS



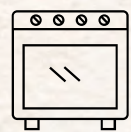
INVERTER AIR
CONDITIONERS IN ROOMS



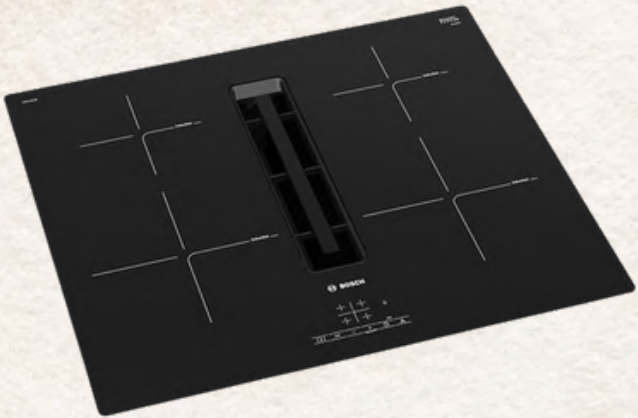
MICROWAVE
OVEN



30" INDUCTION PLATE TYPE STOVE
WITH BUILT-IN EXTRACTOR



30" BUILT-IN
OVEN



EXTERIOR VIEW



LOBBY



POOL AREA



GAME'S ZONE



GYM



LIVING ROOM



KITCHEN



KITCHEN – DINING ROOM



MASTER BEDROOM



BATHROOM



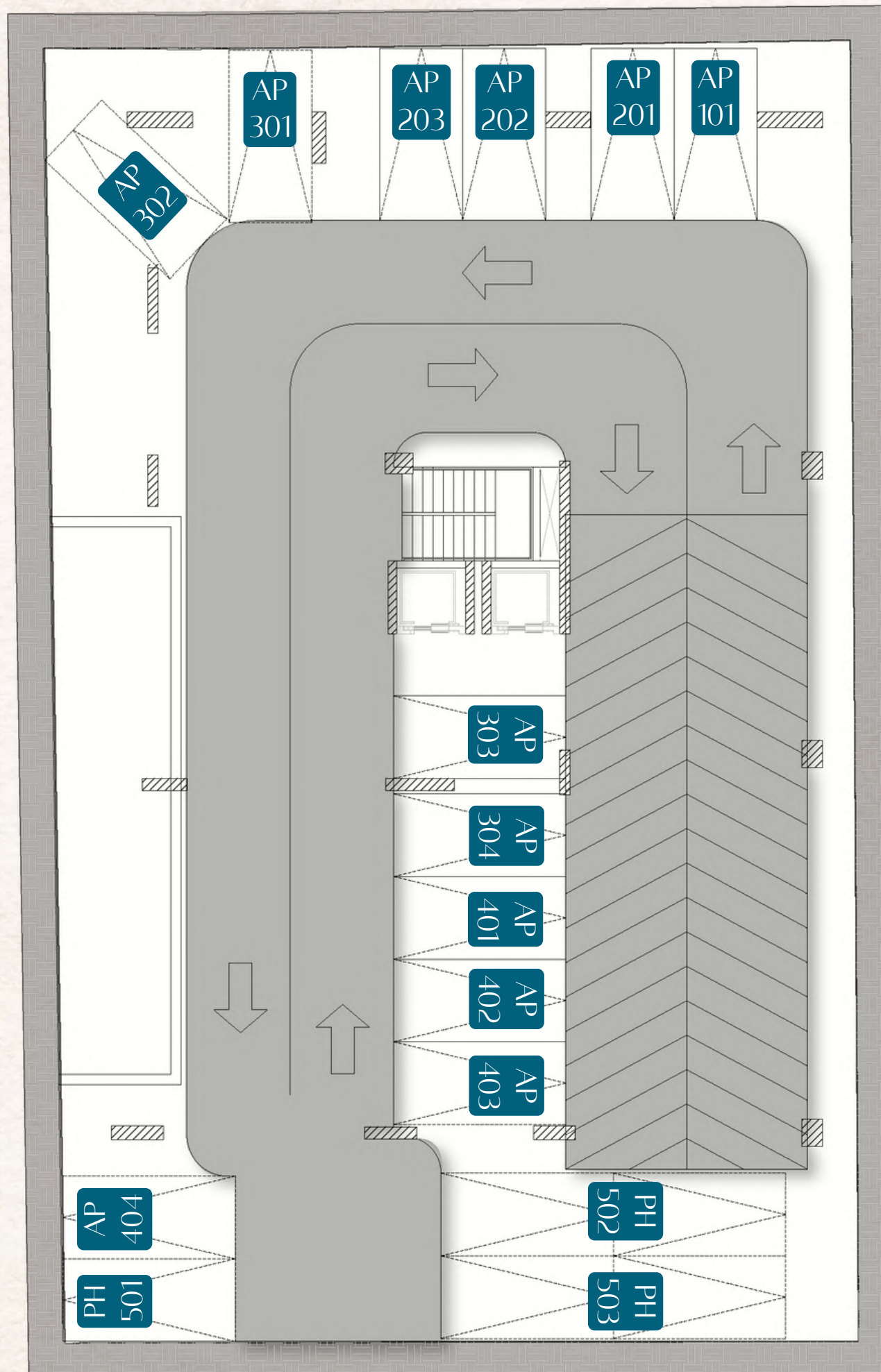
PARKING PLAN

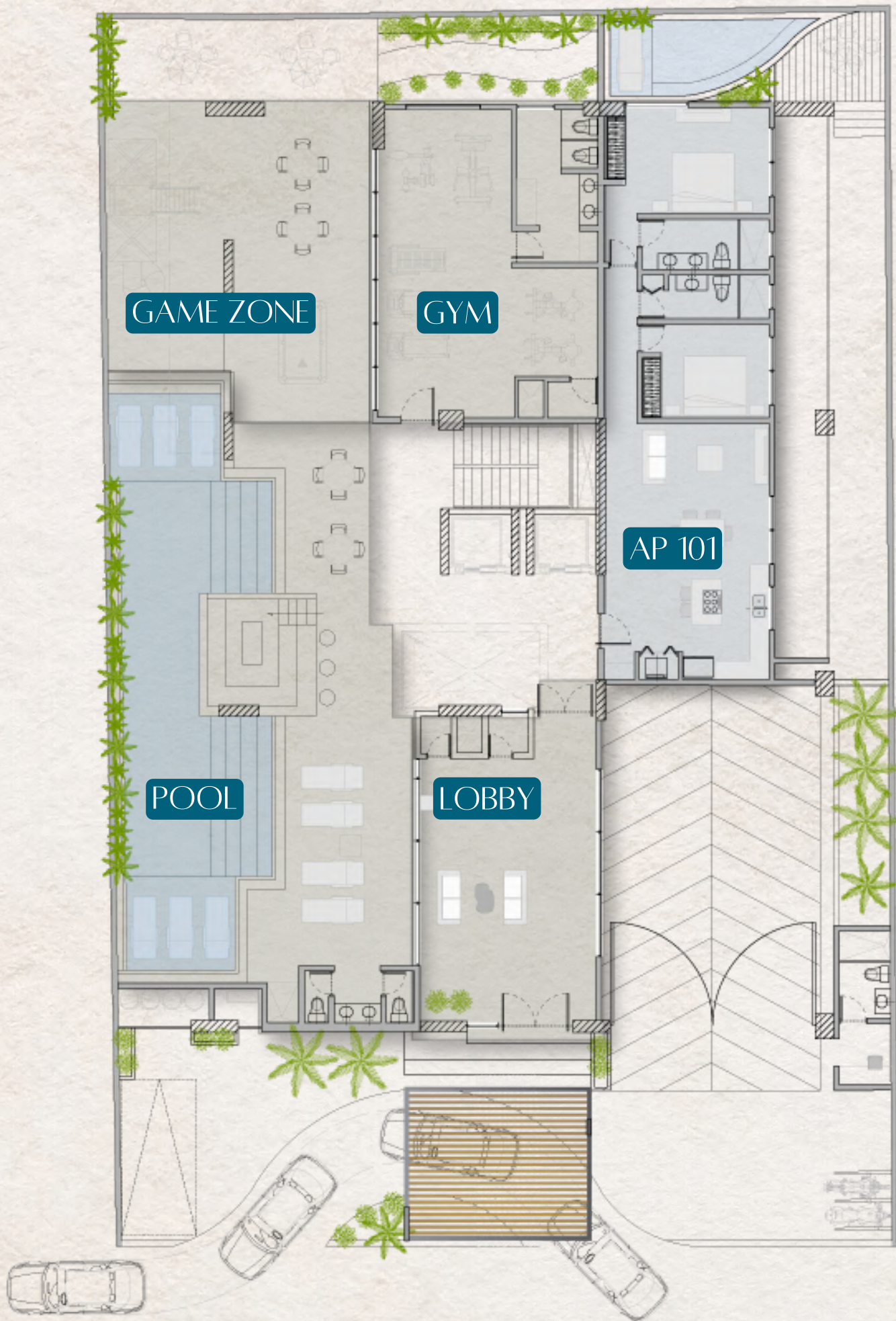
-PARKING SPACES 7.8 FT WIDE X
16.4 FT DEEP, TOTAL 129.1 SQFT

-EACH UNIT HAS ITS ASSIGNED
PARKING

-ACCESS TO THE TWO ELEVATORS
FROM THE UNDERGROUND
PARKING LOT

-REVERSE OSMOSIS WATER
TREATMENT SYSTEM





1ST FLOOR PLAN

APARTMENT TYPE 101

- 1119.45 SQFT OF BUILT AREA
- 968.752 SQFT OF TERRACE
- INCLUDED PICUZZI
- 2 BATHROOMS
- 1 PARKING

GYM

- EQUIPPED GYM
- 753.474 SQFT GYM AIR-CONDITIONED
- BATHROOM AND DRESSING ROOM

GAME'S ZONE

- POOL TABLE
- PING PONG TABLE
- PLAYGROUND

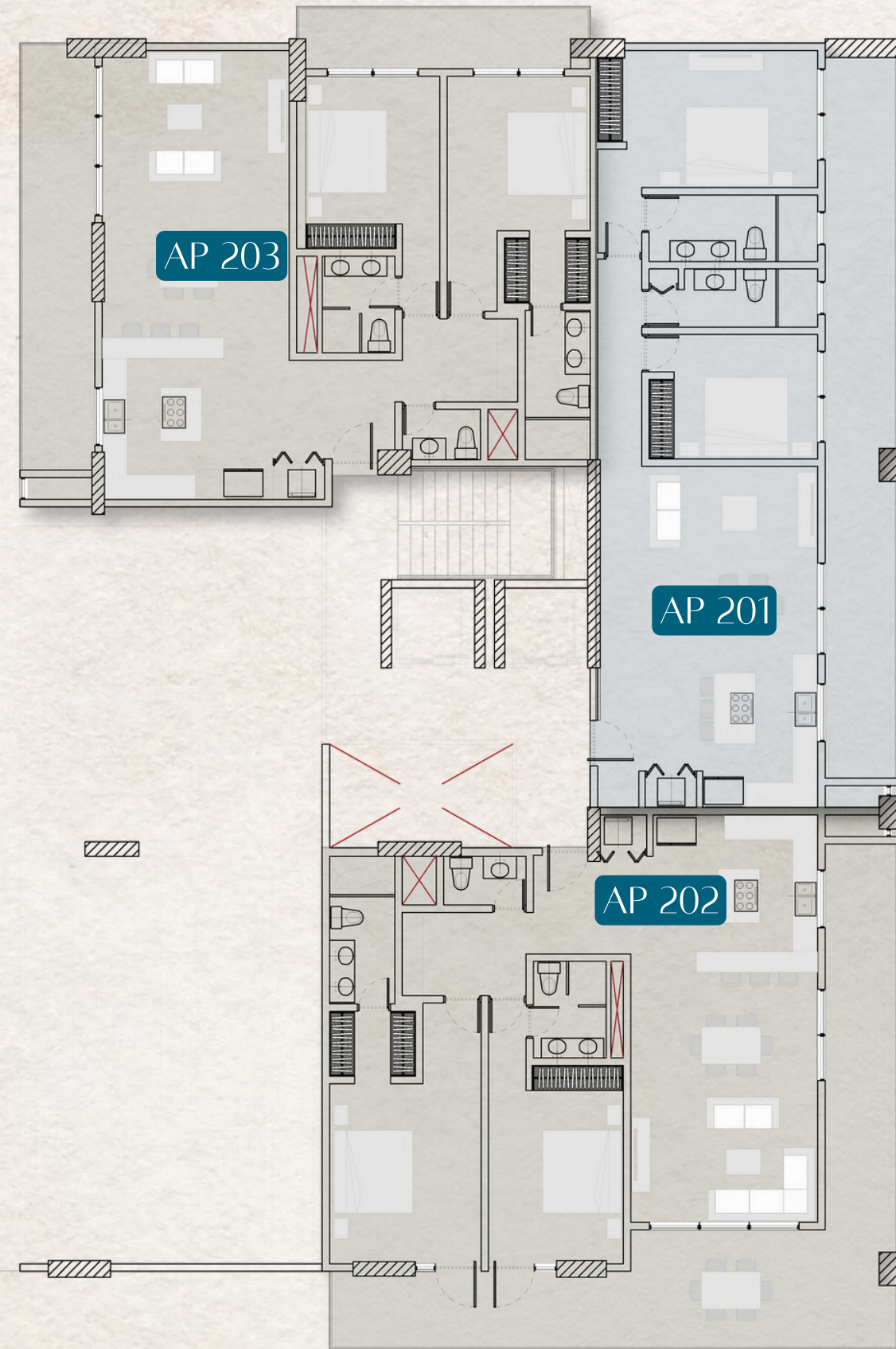
POOL AREA

- 1097.92 SQFT POOL
- LOUNGE AREA
- SOLARIUM AREA WITH CHAISE LONGUE
- BATHROOMS WITH SHOWERS

LOBBY

- AIR-CONDITIONED LOBBY
- SECURITY
- DESK - RECEPTION
- KEEP THE BAGS

2ND FLOOR PLAN

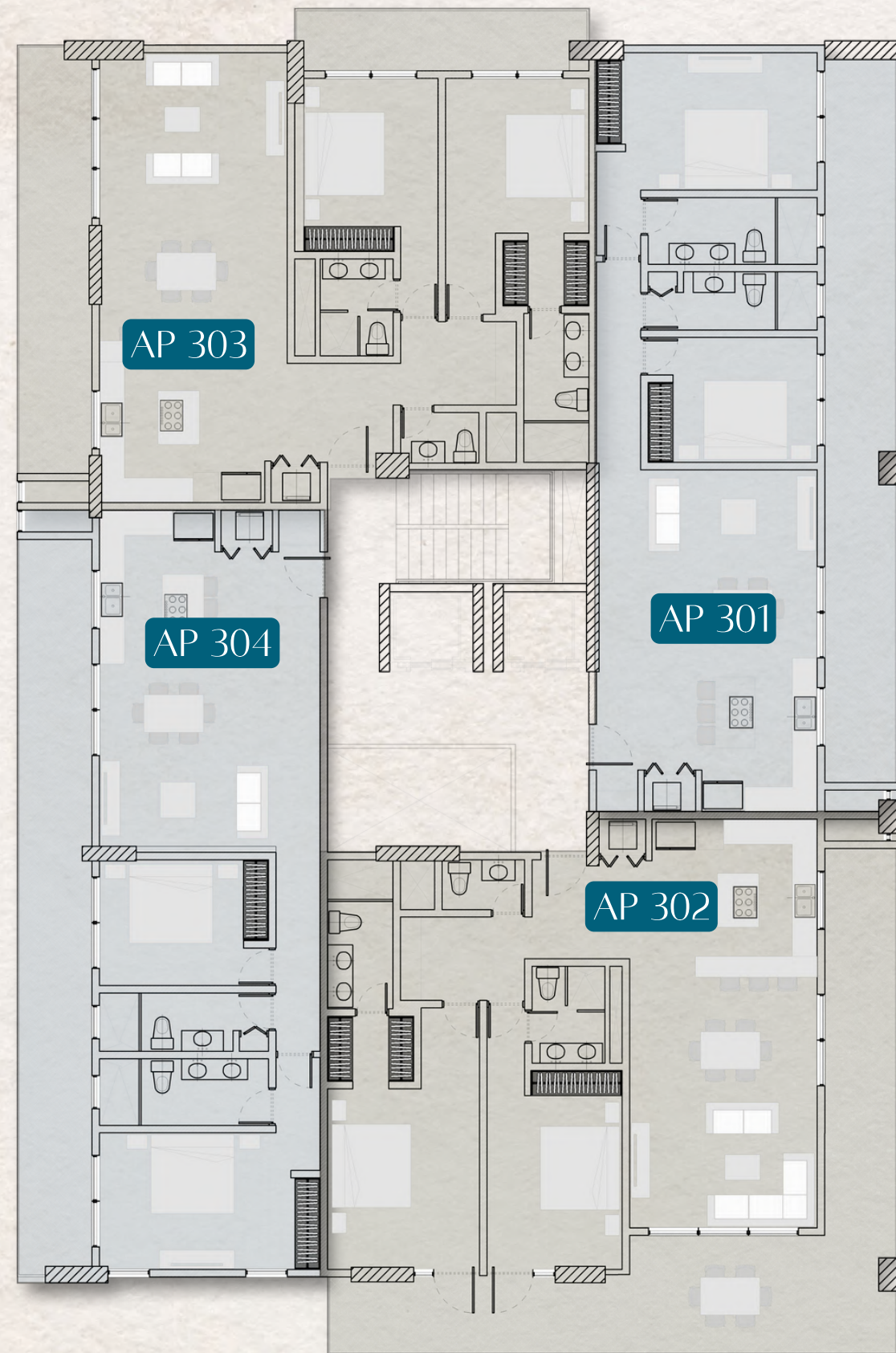


APARTMENT TYPE 201 -1119.45 SQFT OF BUILT AREA
-327.22 SQFT OF TERRACE
-2 ROOMS
-2 BATHROOMS
-1 PARKING

APARTMENT TYPE 202 -1323.96 SQFT OF BUILT AREA
-520.97 SQFT OF TERRACE
-2 ROOMS
-2.5 BATHROOMS
-1 PARKING

APARTMENT TYPE 203 -1323.96 SQFT OF BUILT AREA
-307.8478 SQFT OF TERRACE
-2 ROOMS
-2.5 BATHROOMS
-1 PARKING

3RD AND 4TH FLOOR PLAN



APARTMENT TYPE 301 AND 401

- 1119.45 SQFT OF BUILT AREA
- 327.22 SQFT OF TERRACE
- 2 ROOMS
- 2 BATHROOMS
- 1 PARKING

APARTMENT TYPE 302 AND 402

- 1323.96 SQFT OF BUILT AREA
- 520.97 SQFT OF TERRACE
- 2 ROOMS
- 2.5 BATHROOMS
- 1 PARKING

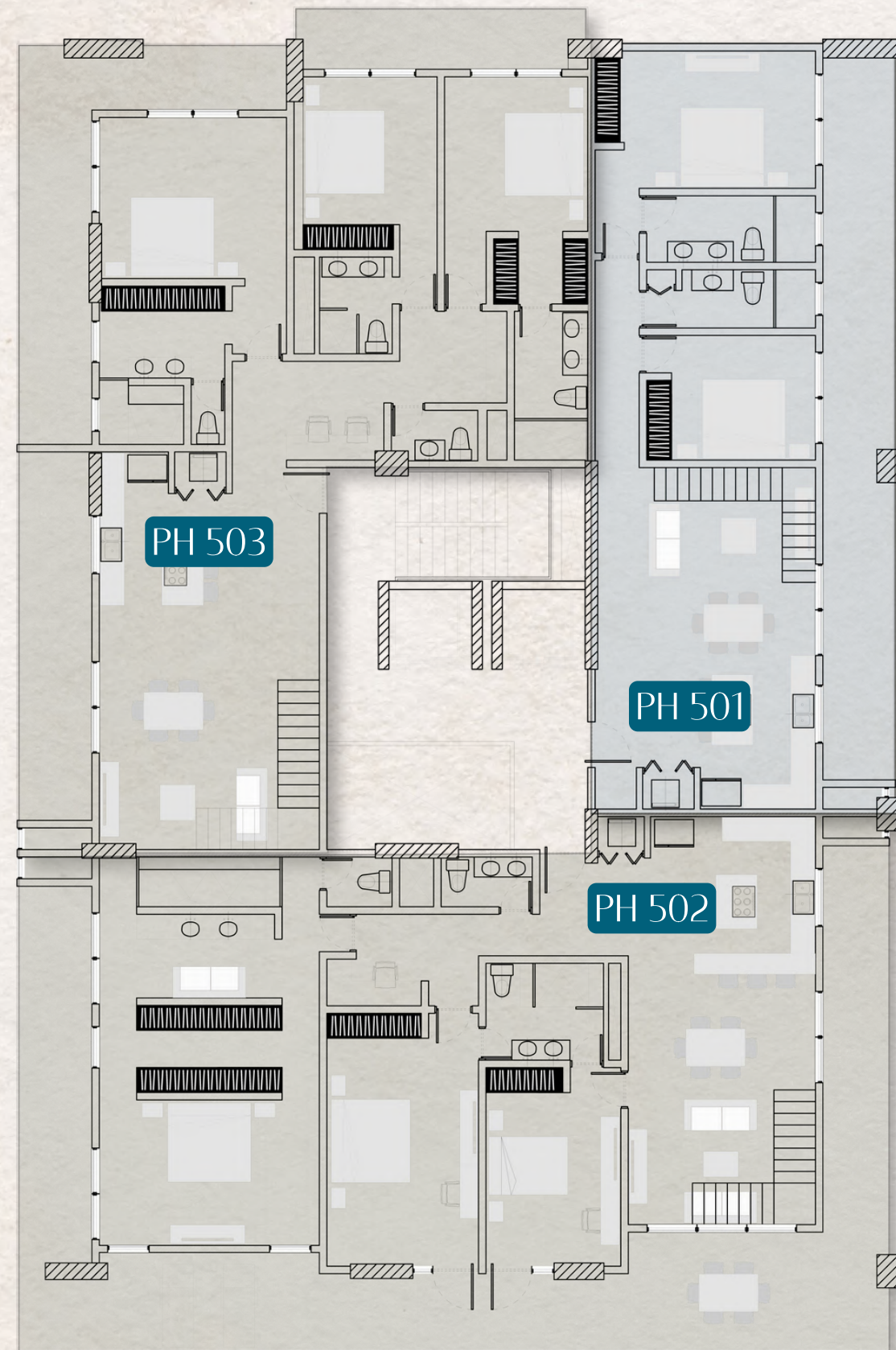
APARTMENT TYPE 303 AND 403

- 1323.96 SQFT OF BUILT AREA
- 307.84 SQFT OF TERRACE
- 2 ROOMS
- 2.5 BATHROOMS
- 1 PARKING

APARTMENT TYPE 304 AND 404

- 1119.45 SQFT OF BUILT AREA
- 340.13 SQFT OF TERRACE
- 2 ROOMS
- 2.5 BATHROOMS
- 1 PARKING

5TH FLOOR PLAN



APARTMENT TYPE PH 501

- 1119.45 SQFT OF BUILT AREA
- 327.22 SQFT OF TERRACE
- 1108.68 SQFT OF ROOF TOP
- 2 ROOMS
- 3 BATHROOMS
- INCLUDED PICUZZI
- 1 PARKING

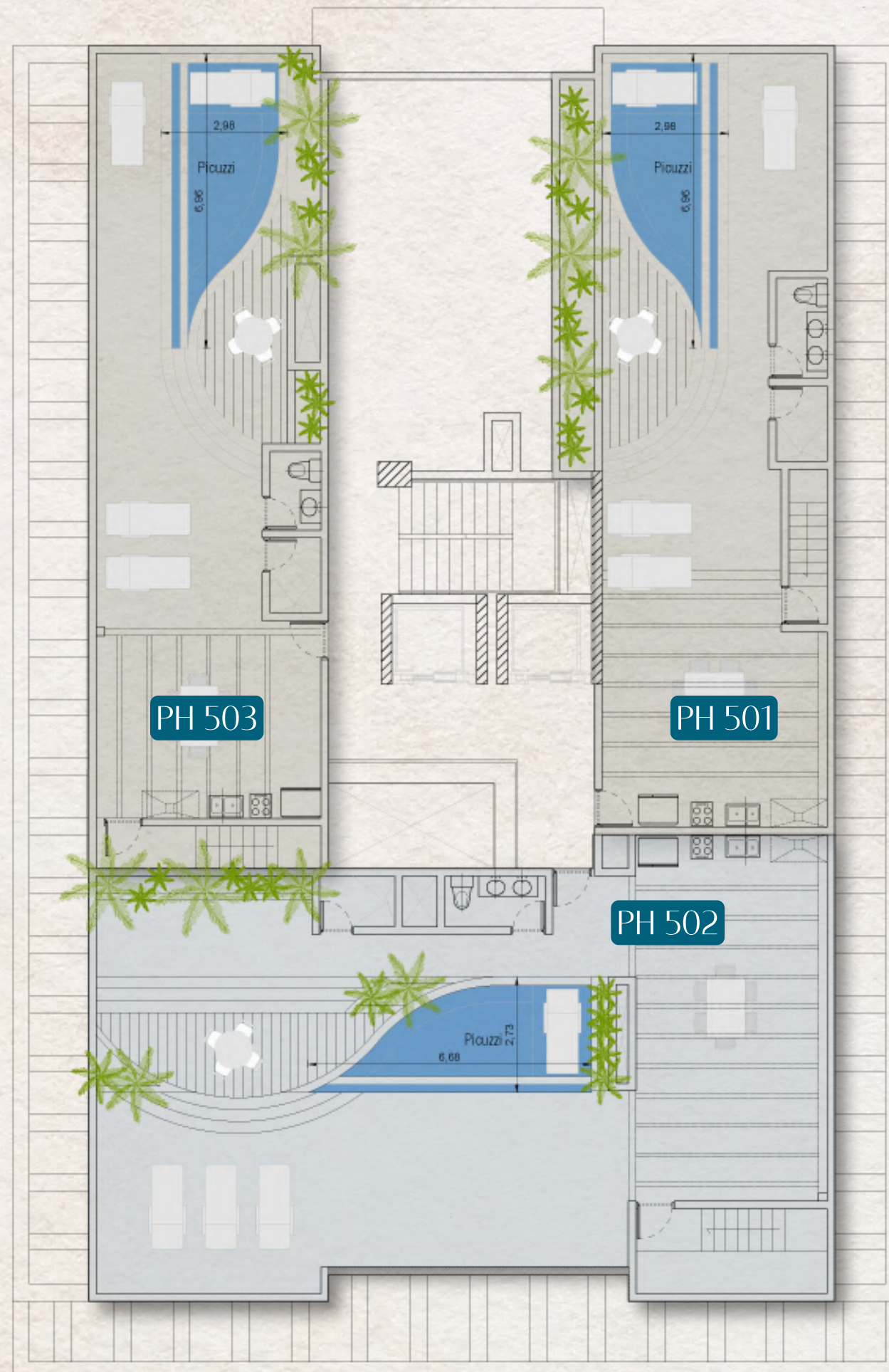
APARTMENT TYPE PH 502

- 1894.45 SQFT OF BUILT AREA
- 855.73 SQFT OF TERRACE
- 1894.45 SQFT OF ROOF TOP
- 3 ROOMS
- 3.5 BATHROOMS
- INCLUDED PICUZZI
- 2 PARKING SPACES

APARTMENT TYPE PH 503

- 1728.68 SQFT OF BUILT AREA
- 548.95 SQFT OF TERRACE
- 1162.5 SQFT OF ROOF TOP
- 3 ROOMS
- 3.5 BATHROOMS
- INCLUDED PICUZZI
- 2 PARKING SPACES

5TH FLOOR PLAN



APARTMENT TYPE PH 501

- 1119.45 SQFT OF BUILT AREA
- 327.22 SQFT OF TERRACE
- 1108.68 SQFT OF ROOF TOP
- 2 ROOMS
- 3 BATHROOMS
- INCLUDED PICUZZI
- 1 PARKING

APARTMENT TYPE PH 502

- 1894.45 SQFT OF BUILT AREA
- 855.73 SQFT OF TERRACE
- 1894.45 SQFT OF ROOF TOP
- 3 ROOMS
- 3.5 BATHROOMS
- INCLUDED PICUZZI
- 2 PARKING SPACES

APARTMENT TYPE PH 503

- 1728.68 SQFT OF BUILT AREA
- 548.95 SQFT OF TERRACE
- 1162.5 SQFT OF ROOF TOP
- 3 ROOMS
- 3.5 BATHROOMS
- INCLUDED PICUZZI
- 2 PARKING SPACES



APARTMENT TYPE 1

APARTMENT
TYPE 101

TOTAL AREA
2088.2 SQFT

- 1119.45 SQFT OF BUILT AREA
- 968.75 SQFT OF TERRACE
- PICUZZI INCLUDED
- 2 ROOMS
- 2 BATHROOMS
- 1 PARKING

1 UNIT
AVAILABLE

TYPE 201

TYPE 301

TYPE 401

- 1119.45 SQFT OF BUILT AREA
- 327.22 SQFT OF TERRACE
- 2 ROOMS
- 2 BATHROOMS
- 1 PARKING

3 UNITS
AVAILABLE

TOTAL AREA
1446.6 SQFT



APARTMENT TYPE 2



APARTMENT

TYPE 202

TYPE 302

TYPE 402

-1323.96 SQFT OF BUILT AREA

-520.97 SQFT OF TERRACE

-2 ROOMS

-2.5 BATHROOMS

-1 PARKING

3 UNITS
AVAILABLE

TOTAL AREA
1844.93 SQFT



APARTMENT TYPE 3



APARTMENT

TYPE 203

TYPE 303

TYPE 403

-1323.96 SQFT OF BUILT AREA

-307.84 SQFT DE TERRAZA

-2 ROOMS

-2.5 BATHROOMS

-1 PARKING

3 UNITS
AVAILABLE

TOTAL AREA
1631.80 SQFT



APARTMENT TYPE 4

APARTMENT
TYPE 304
TYPE 404

- 1119.45 SQFT OF BUILT AREA
- 340.13 SQFT OF TERRACE
- 2 ROOMS
- 2 BATHROOMS
- 1 PARKING

2 UNITS
AVAILABLE

TOTAL AREA
1459.58 SQFT



PENTHOUSE 501

APARTMENT

TYPE PENTHOUSE 501
TOTAL AREA: 2566.11 SQFT

- 1119.45 SQFT OF BUILT AREA
- 327.22 SQFT OF TERRACE
- 1108.68 SQFT OF ROOF TOP
- 2 ROOMS
- 3 BATHROOMS
- INCLUDED PICUZZI
- 1 PARKING

TOTAL AREA
2566.11 SQFT



PENT HOUSE 502

APARTMENT

PENTHOUSE TYPE 502

- 1894.45 SQFT OF BUILT AREA
- 855.73 SQFT OF TERRACE
- 1894.45 SQFT OF ROOF TOP
- 3 ROOMS
- 3.5 BATHROOMS
- INCLUDED PICUZZI
- 2 PARKING SPACES



TOTAL AREA
4644.62 SQFT



PENT HOUSE 503

APARTMENT

PENTHOUSE TYPE 503

- 1728.68 SQFT OF BUILT AREA
- 548.95 SQFT OF TERRACE
- 1162.5 SQFT OF ROOF TOP
- 3 ROOMS
- 3.5 BATHROOMS
- INCLUDED PICUZZI
- 2 PARKING SPACES

TOTAL AREA
3440.14 SQFT

PAYMENT PLANS

1



- 7% discount on the total value of the property

- Reserve 3,000 USD



- 70% upon signing the contract 30 days after booking



- 10% during construction



- 20% upon delivery

• Estimated delivery date December 2025

2



- 5% discount on the total value of the property

- Reserve 3,000 USD



- 50% upon signing the contract 30 days after booking



- 30% during construction



- 20% upon delivery

• Ask about payment options through ESCROW account

3



- Reserve 3,000 USD



- 20% upon signing the contract 30 days after booking



- 60% during construction



- 20% upon delivery



ISLA
CORAL

LUXURY RESIDENCES



ISLA
PALMERA

LUXURY RESIDENCES



ISLA
DEL MAR

LUXURY RESIDENCES



ISLA CORAL

DEVELOPMENTS

PUNTA CANA, REPUBLICA DOMINICANA